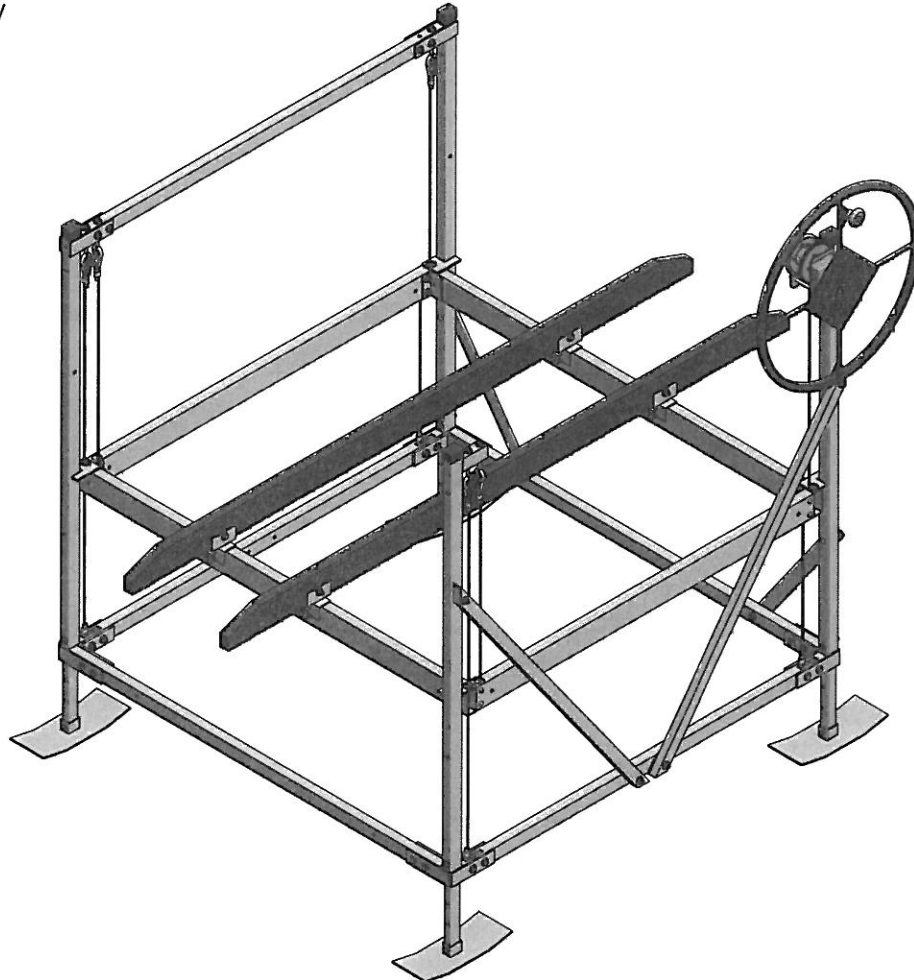


Phone: 218-739-4641  
Fax: 218-739-4008  
www.shoremaster.com



## 1064 Vertical Lift:

Instructions and Safety Tips  
1000 lb. Capacity



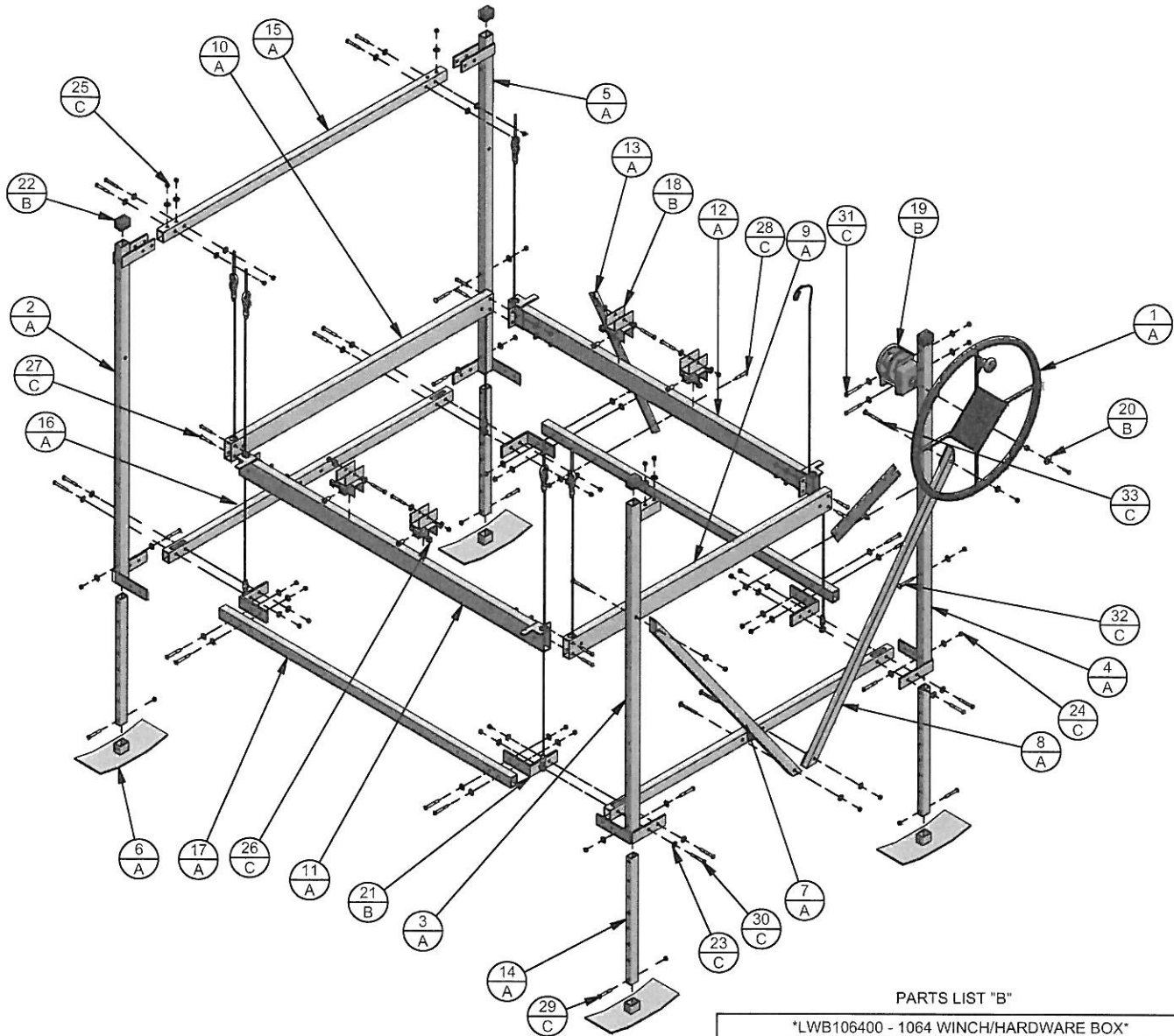
### CAUTION - PUT SAFETY FIRST

1. Before attempting to install or operate this hoist, study and fully understand the proper operating procedures and safety precautions outlined in this owner's manual.
2. Never exceed the recommended weight capacity of your lift. The lifted weight will include hull, engine, fuel, battery, and added accessories or gear. Weigh your fully loaded boat at a certified scale to be absolutely sure of the total weight.
3. Do not allow anyone on, in or under the lift while operating.
4. NOT COMPLYING WITH THE PROCEDURES AND PRECAUTIONS OUTLINED IN THIS MANUAL WILL INVALIDATE THE WARRANTY AND MAY RESULT IN PERSONAL INJURY OR DEATH.
5. If you have any questions about assembly, installation, operation or suitability of this product, contact an authorized dealer or ShoreMaster directly at 1-800-328-8945.

# TABLE OF CONTENTS

|                           |       |
|---------------------------|-------|
| Exploded View             | 3     |
| □                         |       |
| Parts                     | 4     |
| □                         |       |
| Fasteners and Hardware    | 5-6   |
| □                         |       |
| Assembly                  | 7-17  |
| □                         |       |
| Proper Cable Locations    | 18    |
| □                         |       |
| Proper Cable Adjustment   | 19    |
| □                         |       |
| Installation              | 20    |
| □                         |       |
| Operation and Maintenance | 21-22 |
| □                         |       |
| Limited Warranty          | 23    |
| □                         |       |
| Warranty Card             | 24    |
| □                         |       |

# 1064 VERTICAL LIFT



PARTS LIST "A"

| *BDL001064 - BUNDLE 1064 VERTICAL LIFT* |     |             |                    |
|---|-----|-------------|--------------------|
| ITEM                                    | QTY | PART NUMBER | DESCRIPTION        |
| 1                                       | 1   | LPSMWHEEL   | WHEEL              |
| 2                                       | 1   | LPLRU1064   | LEFT REAR UPRIGHT  |
| 3                                       | 1   | LPRRU1064   | RIGHT REAR UPRIGHT |
| 4                                       | 1   | LPRFU1064   | WINCH UPRIGHT      |
| 5                                       | 1   | LPLFU1064   | FRONT UPRIGHT      |
| 6                                       | 4   | LP800LPAD   | FOOT PAD           |
| 7                                       | 1   | LP1064BRL   | V BRACE LEFT       |
| 8                                       | 1   | LP1064BRR   | V BRACE RIGHT      |
| 9                                       | 1   | LPSRR1064   | RACK SIDE RIGHT    |
| 10                                      | 1   | LPSRL1064   | RACK SIDE LEFT     |
| 11                                      | 1   | LPRRB1064   | REAR RACK          |
| 12                                      | 1   | LPFRB1064   | FRONT RACK         |
| 13                                      | 2   | LP855BRCE   | SUPPORT BRACE      |
| 14                                      | 4   | 77102400D   | LEG POST           |
| 15                                      | 1   | 76906250H   | TOP SIDE           |
| 16                                      | 2   | LPSBT1064   | BOTTOM SIDE        |
| 17                                      | 2   | LP01064BB   | BOTTOM BEAM        |

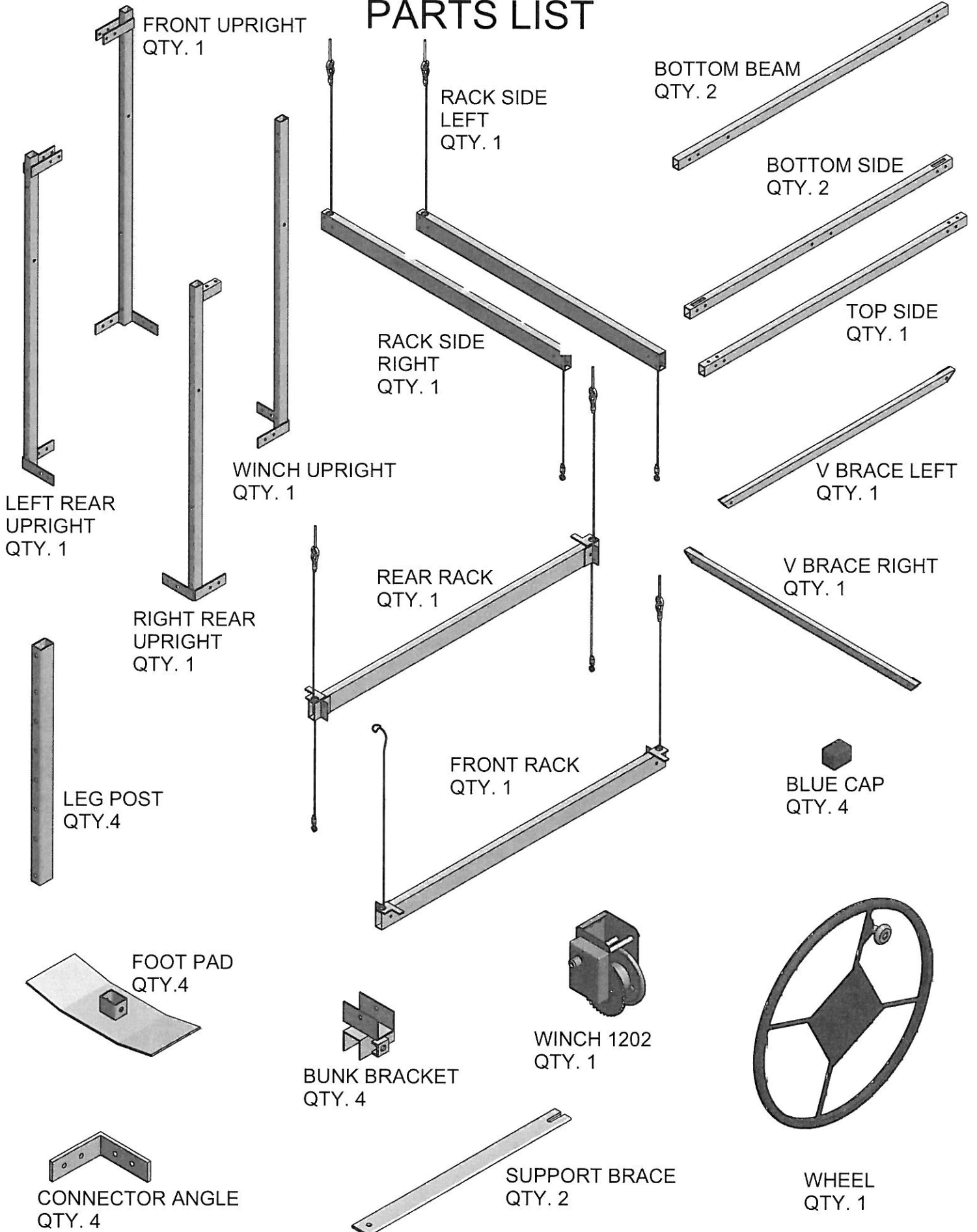
PARTS LIST "B"

| *LWB106400 - 1064 WINCH/HARDWARE BOX* |     |             |                    |
|---------------------------------------|-----|-------------|--------------------|
| ITEM                                  | QTY | PART NUMBER | DESCRIPTION        |
| 18                                    | 4   | AP1060BBK   | BUNK BRACKET       |
| 19                                    | 1   | DL12020WN   | WINCH 1202         |
| 20                                    | 1   | DLW304130   | WINCH HARDWARE KIT |
| 21                                    | 4   | 05800200D   | CONNECTOR ANGLE    |
| 22                                    | 4   | BLUECAPS4   | BLUE CAP           |

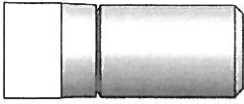
PARTS LIST "C"

| *LBB106000 - 1064 BOLT BAG COMPLETE* |     |             |                       |
|--------------------------------------|-----|-------------|-----------------------|
| ITEM                                 | QTY | PART NUMBER | DESCRIPTION           |
| 23                                   | 83  | M380WASHR   | WASHER FLAT 3/8       |
| 24                                   | 40  | M380RGNUT   | NUT 3/8               |
| 25                                   | 15  | M38LOCNUT   | NUT 3/8 NYLOC         |
| 26                                   | 4   | M120SQNUT   | NUT 1/2 SQUARE        |
| 27                                   | 8   | MS380214T   | BOLT TRUSS 3/8 X 2.25 |
| 28                                   | 2   | MS380214B   | BOLT 3/8 X 2.25       |
| 29                                   | 8   | MS380212B   | BOLT 3/8 X 2.5        |
| 30                                   | 24  | MS380234B   | BOLT 3/8 X 2.75       |
| 31                                   | 2   | MS380314B   | BOLT 3/8 X 3.25       |
| 32                                   | 2   | MC380234B   | BOLT CARR 3/8 X 2.75  |
| 33                                   | 4   | MS380314B   | BOLT CARR 3/8 X 3.25  |
| 34                                   | 4   | S120SETSW   | SET SCREW 1/2 X 1.25  |

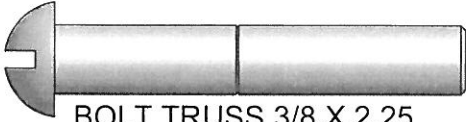
# PARTS LIST



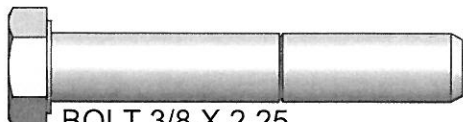
# FASTENERS AND HARDWARE



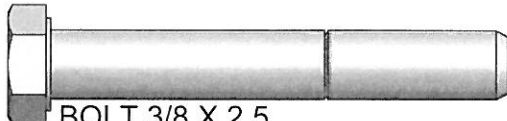
SET SCREW 1/2 X 1.25  
QTY. 4



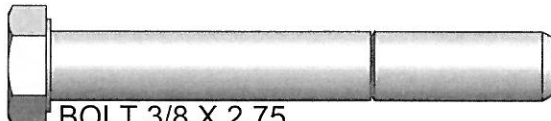
BOLT TRUSS 3/8 X 2.25  
QTY. 8



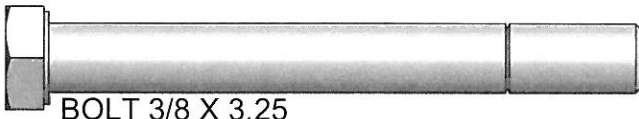
BOLT 3/8 X 2.25  
QTY. 2



BOLT 3/8 X 2.5  
QTY. 8



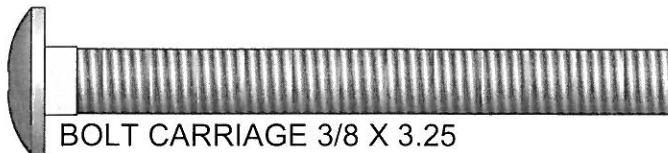
BOLT 3/8 X 2.75  
QTY. 24



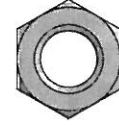
BOLT 3/8 X 3.25  
QTY. 2



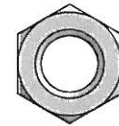
BOLT CARRIAGE 3/8 X 2.75  
QTY. 2



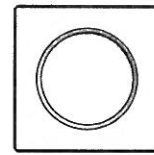
BOLT CARRIAGE 3/8 X 3.25  
QTY. 4



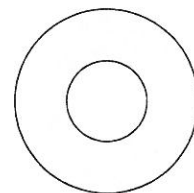
NUT 3/8  
QTY. 40



NUT 3/8 NYLOC  
QTY. 15

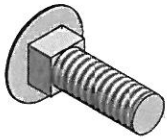


NUT 1/2 SQUARE  
QTY. 4

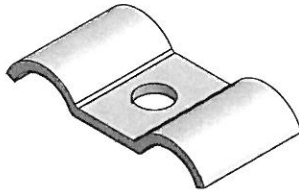


WASHER FLAT 3/8  
QTY. 83

# WINCH HARDWARE KIT



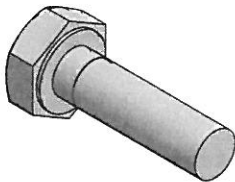
BOLT CARRIAGE 1/4 X .75  
QTY. ONE



CABLE CLAMP  
QTY. ONE



NUT 1/4 W/  
STAR WASHER  
QTY. ONE



BOLT 5/16 X 1 NYLOC  
QTY. ONE



WASHER FLAT 5/16  
QTY. ONE



WHEEL SPACER  
QTY. ONE

# ASSEMBLY INSTRUCTIONS

Your safety is the most important issue related to this product.

- Fully read and understand each step before proceeding with that step.
- Wear protective gloves, clothing and eyewear when assembling and installing the lift.
- Do not assemble, install or use this product if items are missing or damaged.

For ease of assembly find a flat area with plenty of room to assemble lift. The following tools will be needed for assembling lift:

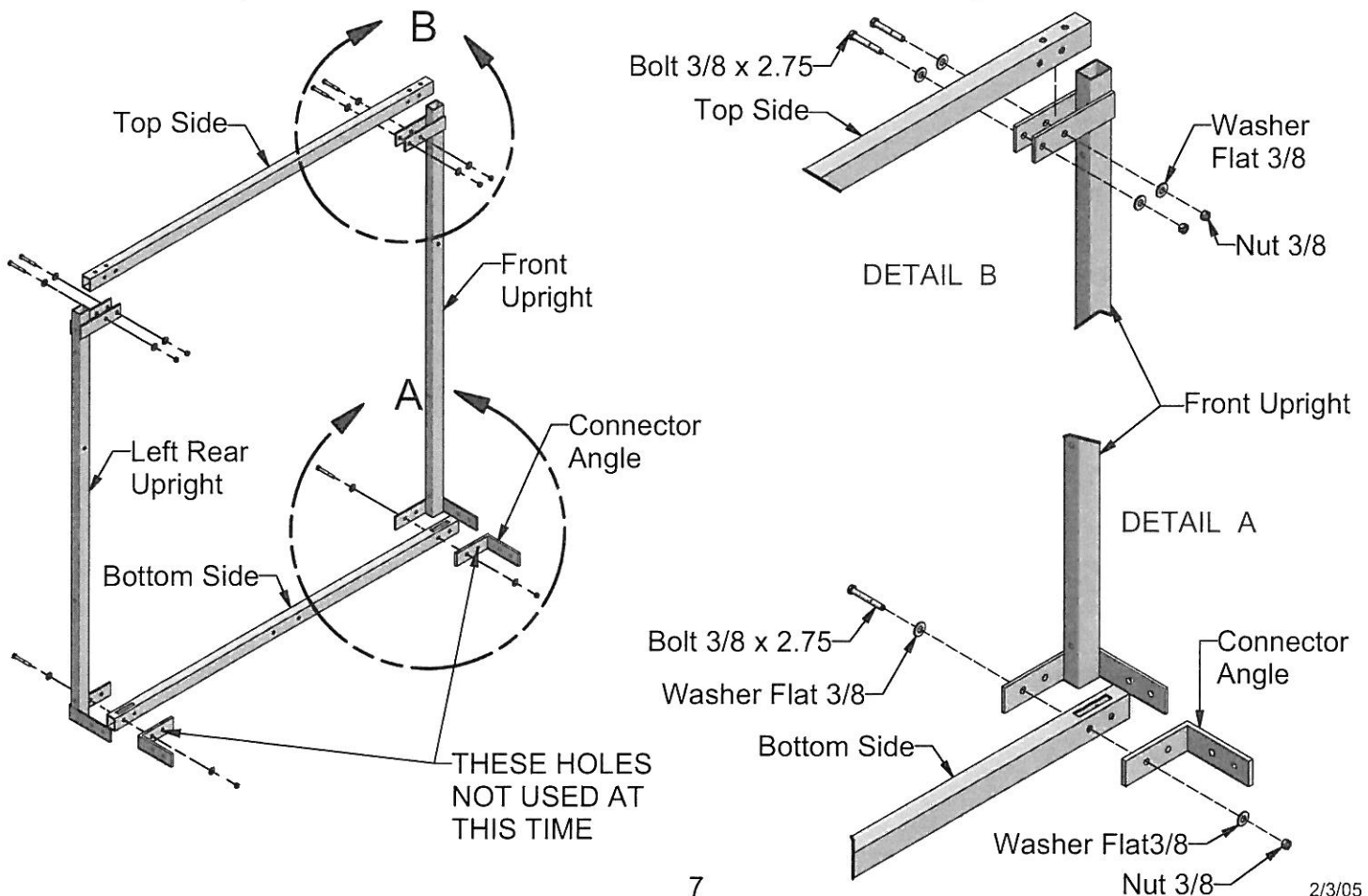
1. 7/16" Wrench
2. Pair of 9/16" Wrenches
3. Measuring Tape
4. Sharp Knife or Razor
5. Phillips head screw driver

## STEP 1

Attach one Bottom Side and two Connector Angles to the Front Upright and the Left Rear Upright. Secure in two places with one Bolt 3/8 x 2.75, two Washers Flat 3/8 and one Nut 3/8 - as shown in Detail "A."

**Note:** Only one Bolt at each Connector Angle is used at this time. The remaining hole will be used in a later step. See below for the proper holes to bolt through.

Attach the Top Side to the Front Upright and the Left Rear Upright. Secure in for places with one Bolt 3/8 x 2.75, two Washers Flat 3/8 and one Nut 3/8 - as shown in Detail "B."



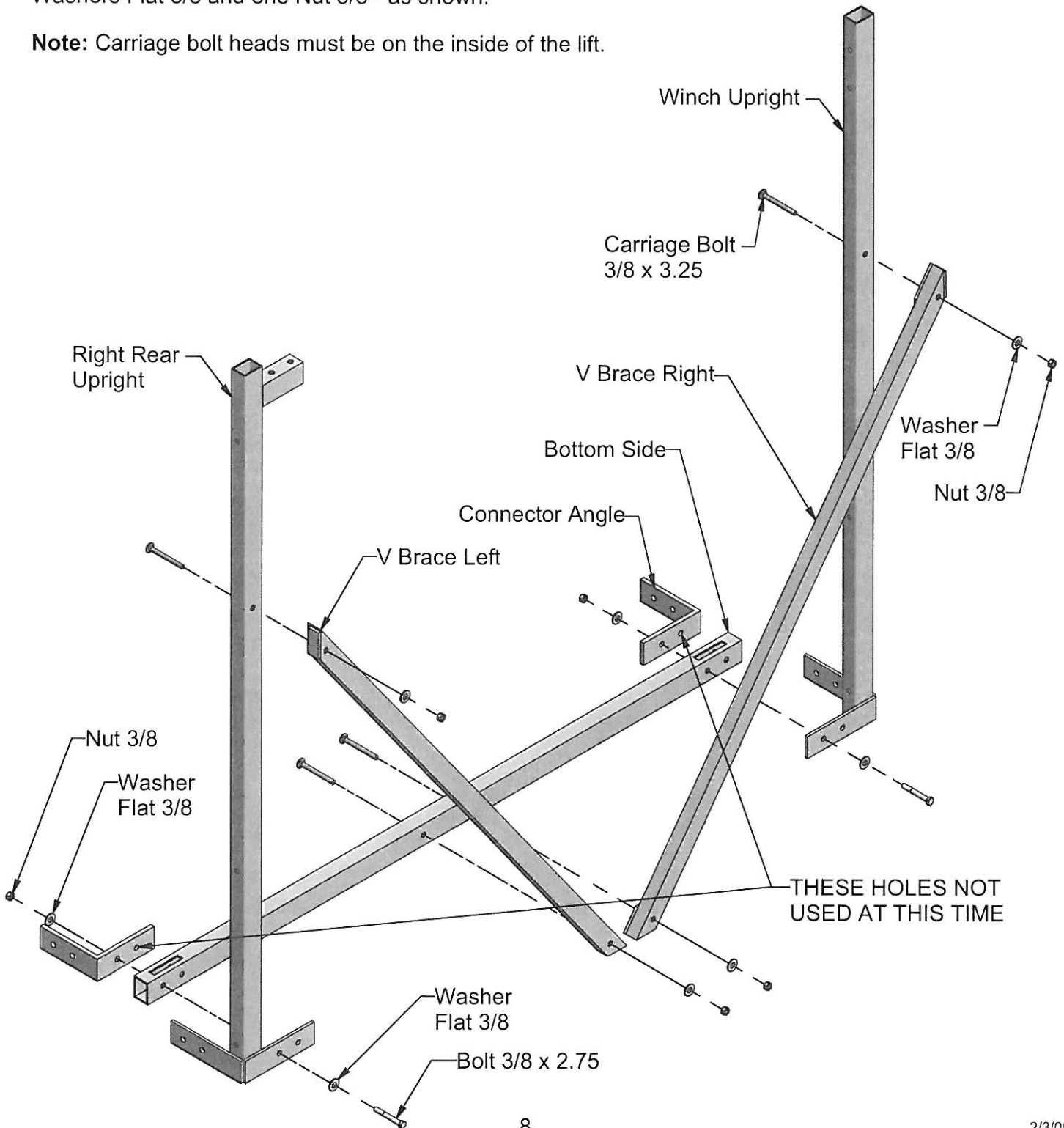
# STEP 2

Attach one Bottom Side and two Connector Angles to the Winch Upright and the Right Rear Upright. Secure in two places with one Bolt 3/8 x 2.75, two Washers Flat 3/8 and one Nut 3/8 - as shown.

**Note:** Only one Bolt at each Connector Angle is used at this time. The remaining hole will be used in a later step. See below for the proper holes to bolt through.

Attach the V Brace Right to the Winch Upright and the Bottom Side. Attach the V Brace Left to the Right Rear Upright and the Bottom Side. Secure in four places with one Bolt Carriage 3/8 x 3.25, one Washers Flat 3/8 and one Nut 3/8 - as shown.

**Note:** Carriage bolt heads must be on the inside of the lift.

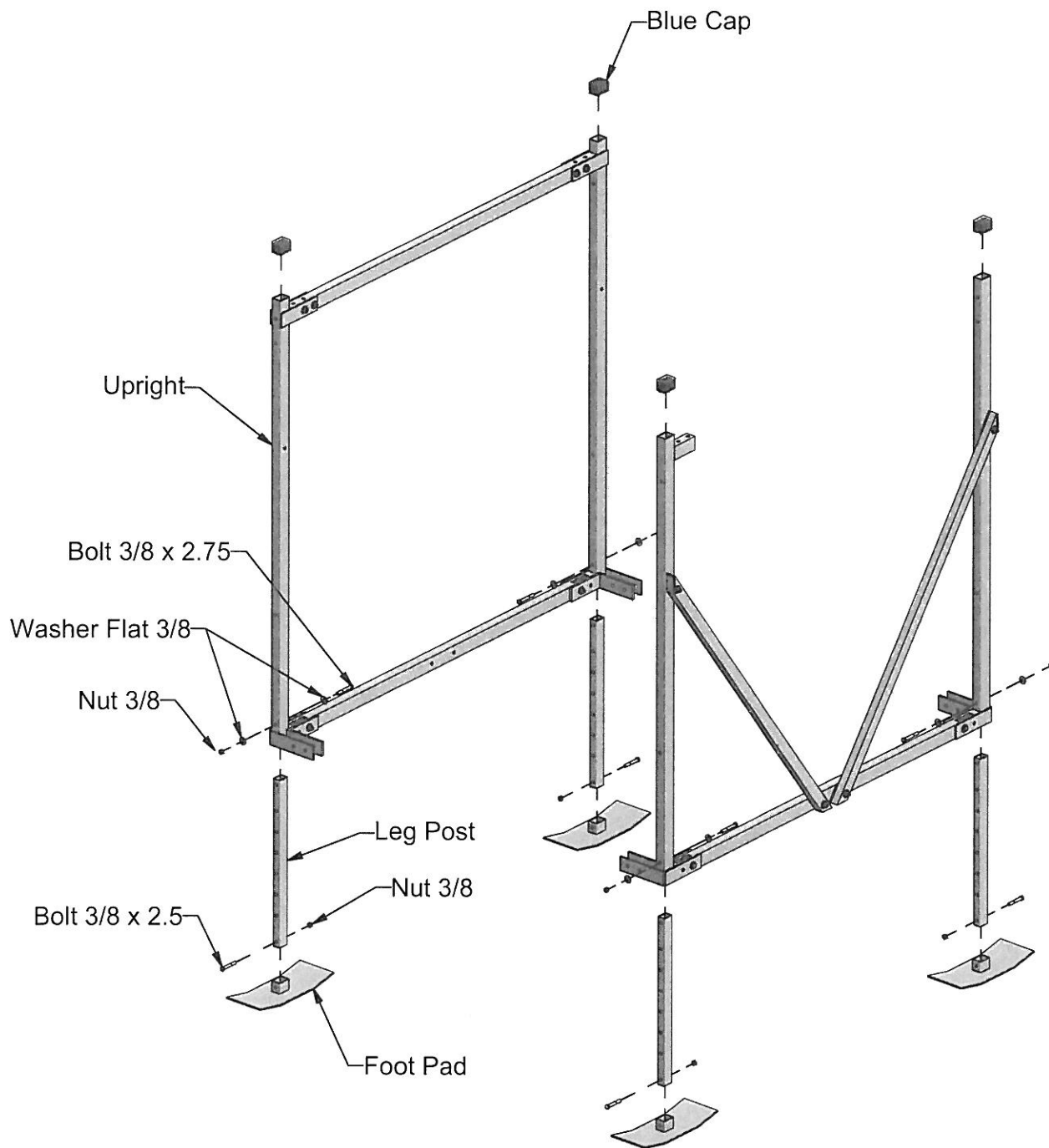




# STEP 3

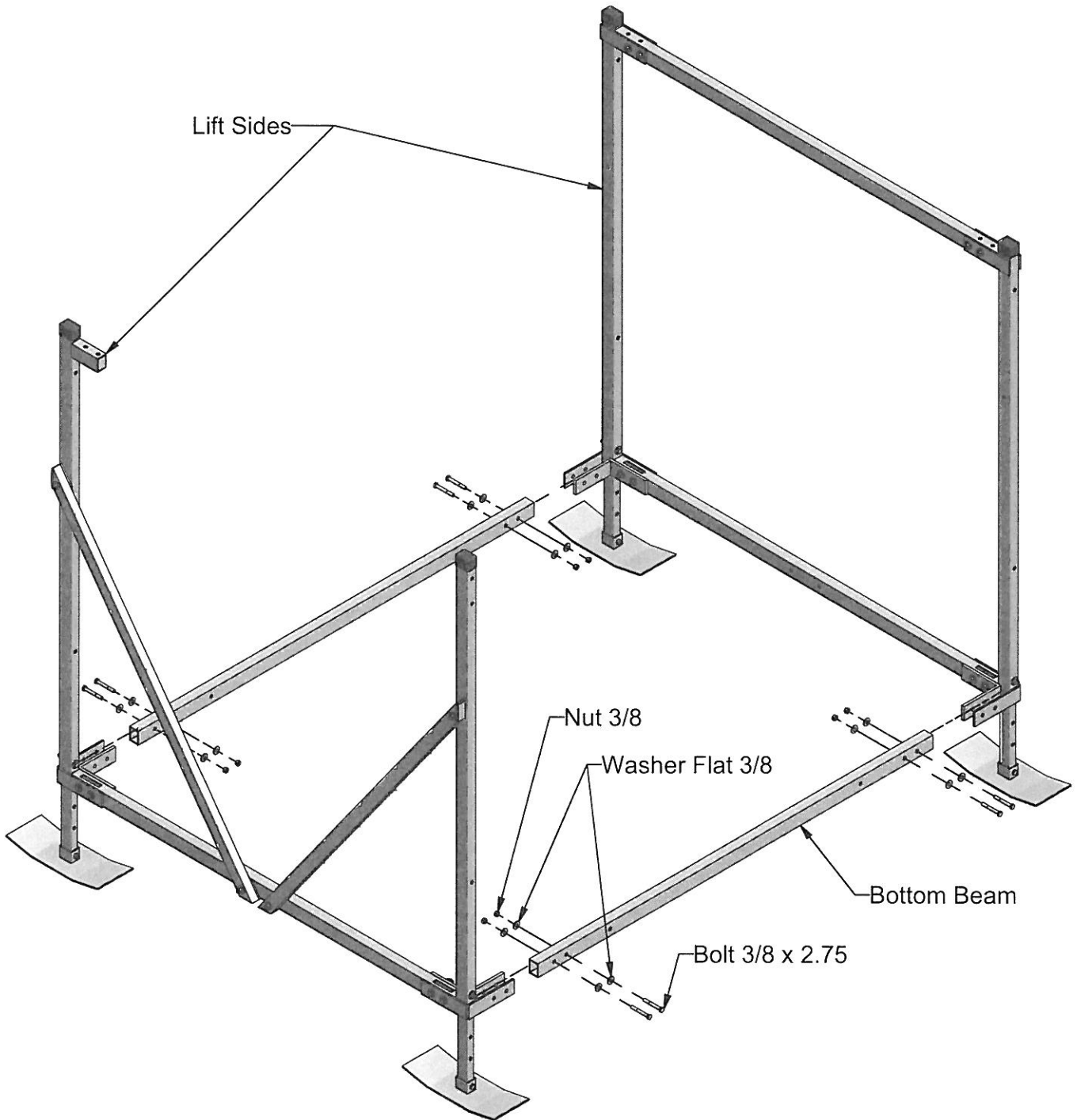
Slide Blue Caps on uprights as shown. Insert all four Leg Posts into Foot Pads. Secure using one Bolt 3/8 x 2.5 and one Nut 3/8 at each place - as shown.

Insert one Leg Post into each upright. Secure each Leg Post with one Bolt 3/8 x 2.75, two Washers Flat 3/8 and one Nut 3/8 - as shown.



# STEP 4

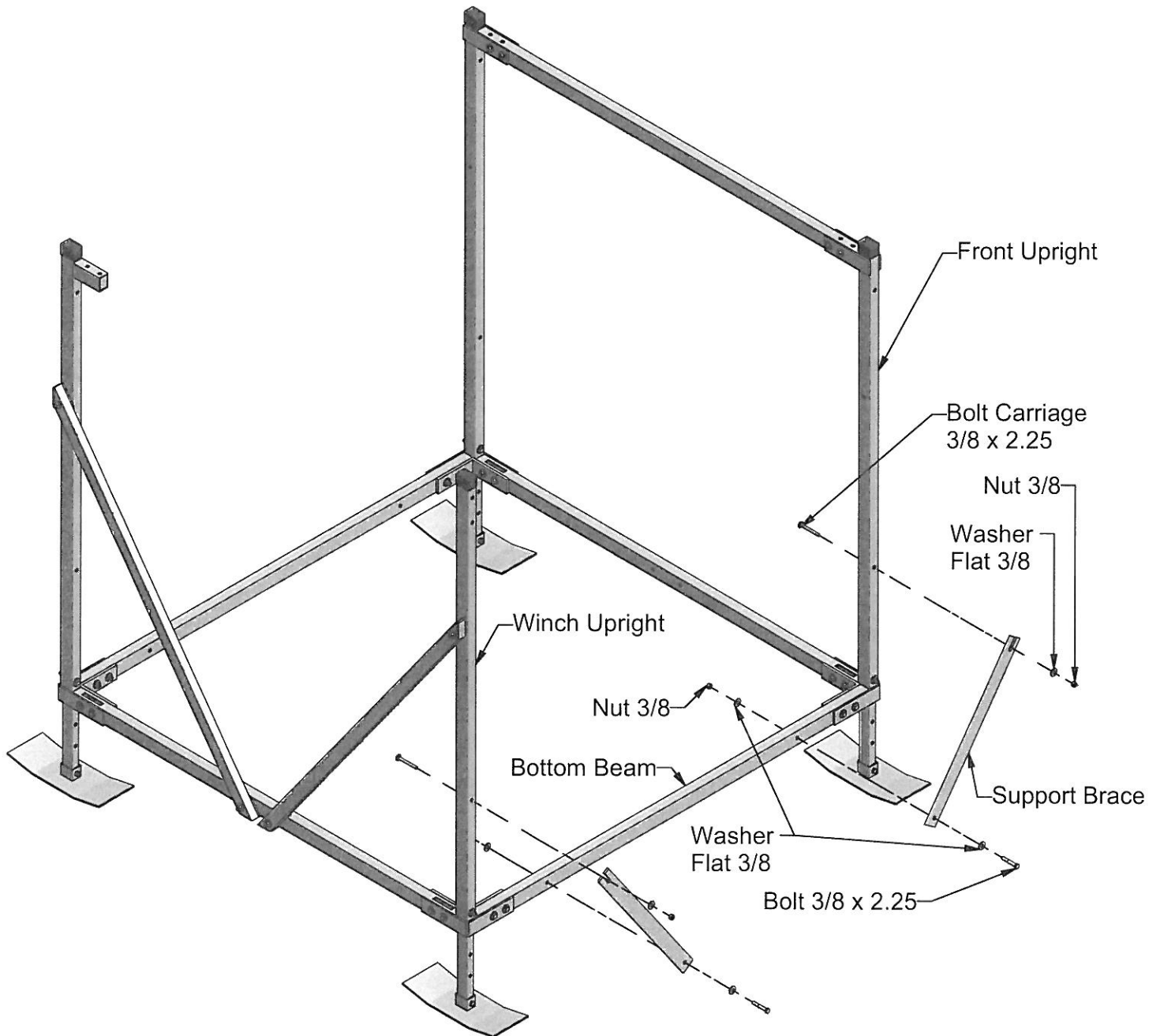
Place the assembled Lift Sides about 5 feet apart. Attach one Bottom Beam to the *front* and one Bottom Beam to the *rear* of the Lift Sides. Secure each Bottom Beam in four places with one Bolt 3/8 x 2.75, two Washers Flat 3/8 and one Nut 3/8 - as shown.



# STEP 5

Attach Support Braces to the Front and Winch Uprights and Bottom Beam as shown. Secure Support Braces to the Uprights with one Bolt Carriage 3/8 x 2.75, one Washers Flat 3/8 and one Nut 3/8 in 2 places. Secure to Bottom Beam using one Bolt 3/8 x 2.25, two Washers Flat 3/8 and one Nut 3/8 in 2 places - as shown.

**Note:** The rounded heads of the Bolts Carriage 3/8 x 2.75 must be on the inside of the lift - as shown. Placing the heads on the outside of the lift will cause the rack to catch and will damage the lift.



**Note:** Take two measurements between the two Lift Sides, one at the top and one at the bottom. The measurement should be the same at the top and bottom of the Lift Sides.

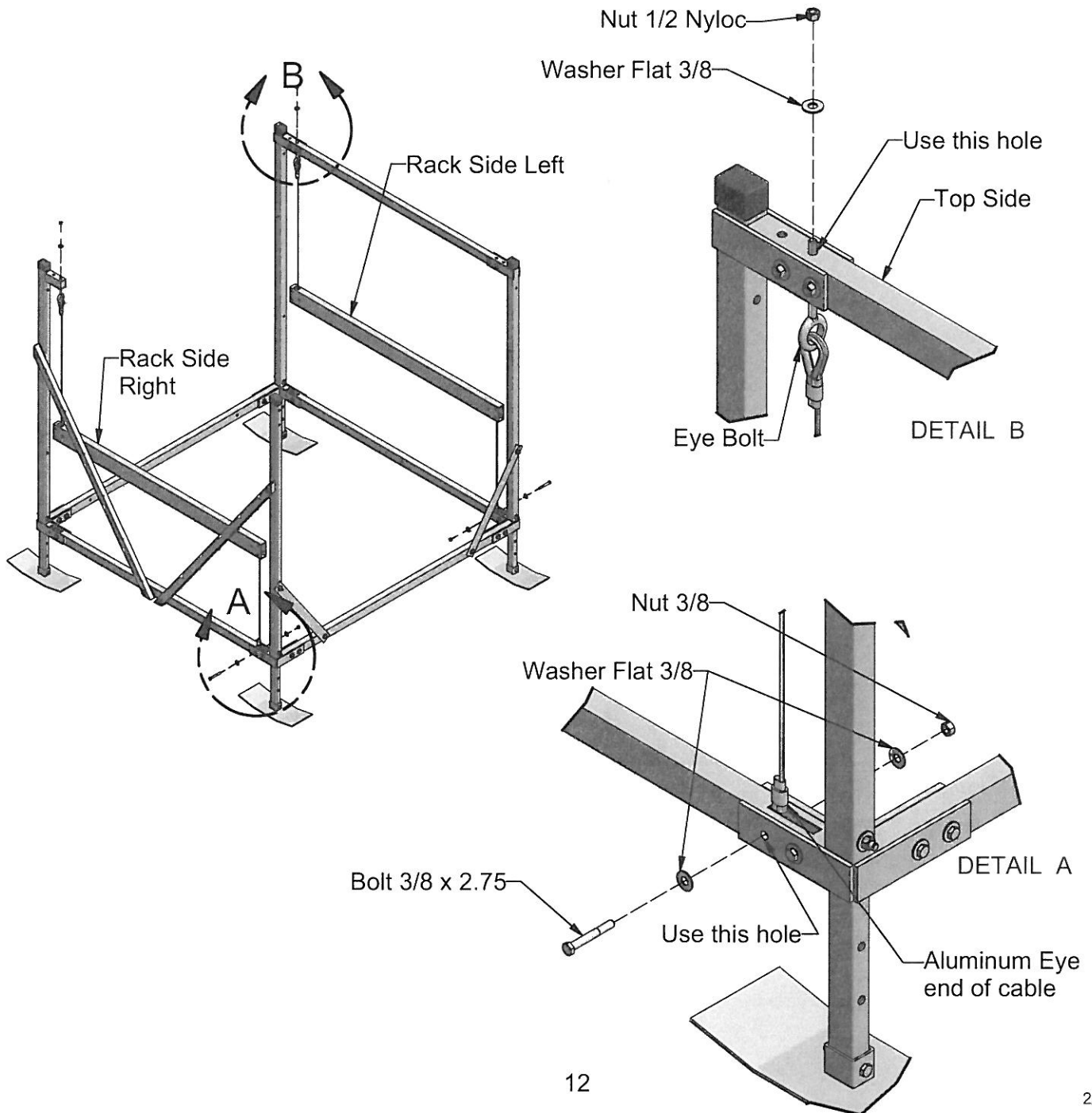
# STEP 6

Set Rack Side Right in the lift side with the V Braces and the Rack Side Left in the other lift side - as shown.

A - Set Aluminum Eye end of cable in the slot of the front of the Bottom Side. Secure with one Bolt 3/8 x 2.75, two Washers Flat 3/8 and one Nut 3/8 - as shown in Detail "A."

B - Insert the Eye Bolt end of cable through the hole in the Top Side. Secure with one Washer Flat 3/8 and one Nut 3/8 Nyloc.

**NOTE:** Be sure washer is in place and that the nyloc nut is tightend so at least 1/4" of Eye Bolt thread is exposed.

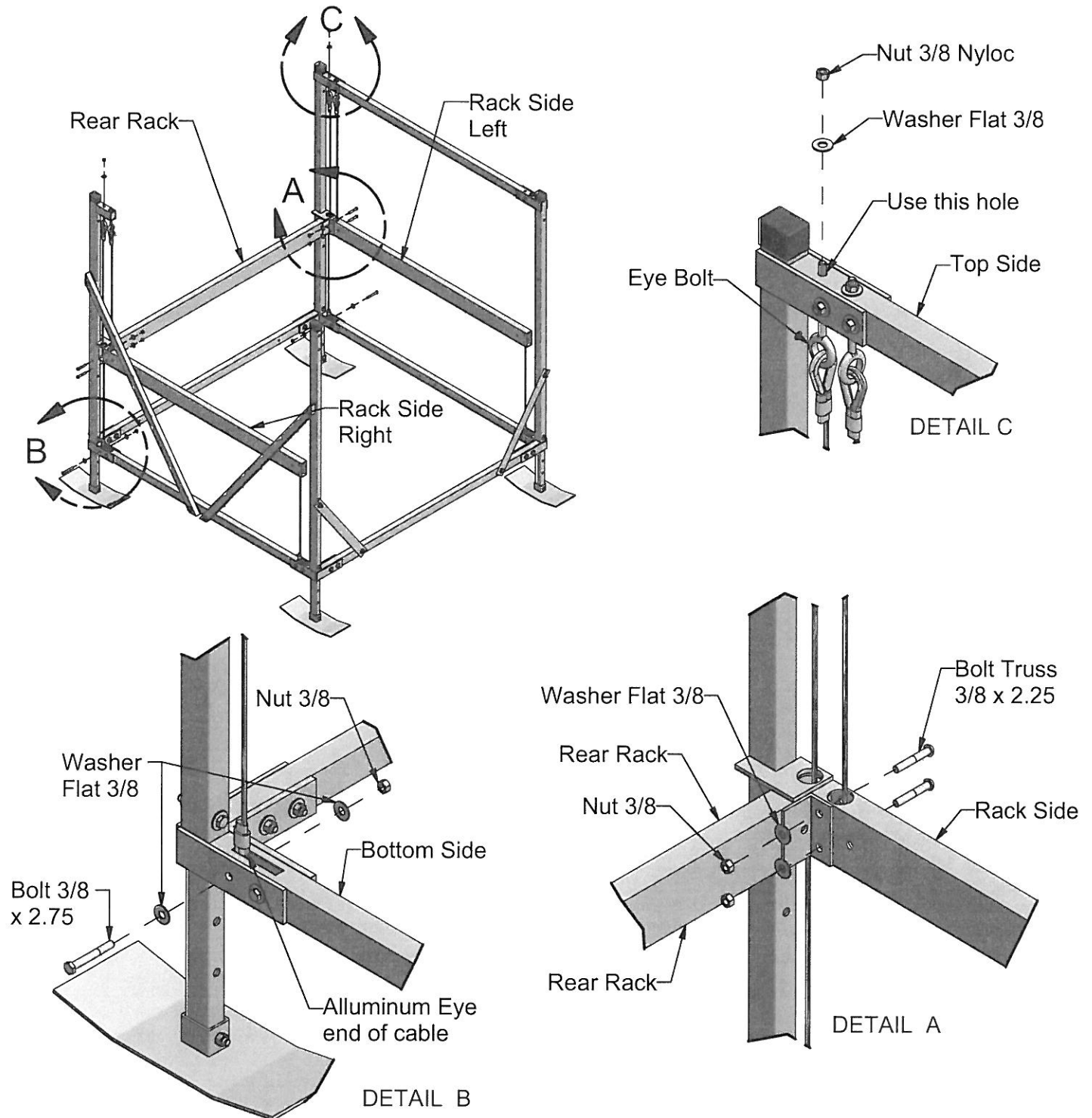


# STEP 7

Attach Rear Rack to Rack Sides. At each end secure with two Bolts Truss 3/8 x 2.25, four Washers Flat 3/8 and two Nuts 3/8 Nyloc - as shown in Detail "A."

Secure Aluminum Eye end of cables to both Bottom Sides with one Bolt 3/8 x 2.75, two Washers Flat 3/8 and one Nut 3/8 - as shown in Detail "B."

Insert the Eye Bolts of the Rear Rack cables through the hole in the top of the Top Sides. Secure with one Washer Flat 3/8 and one Nut 3/8 Nyloc as shown in Detail "C."

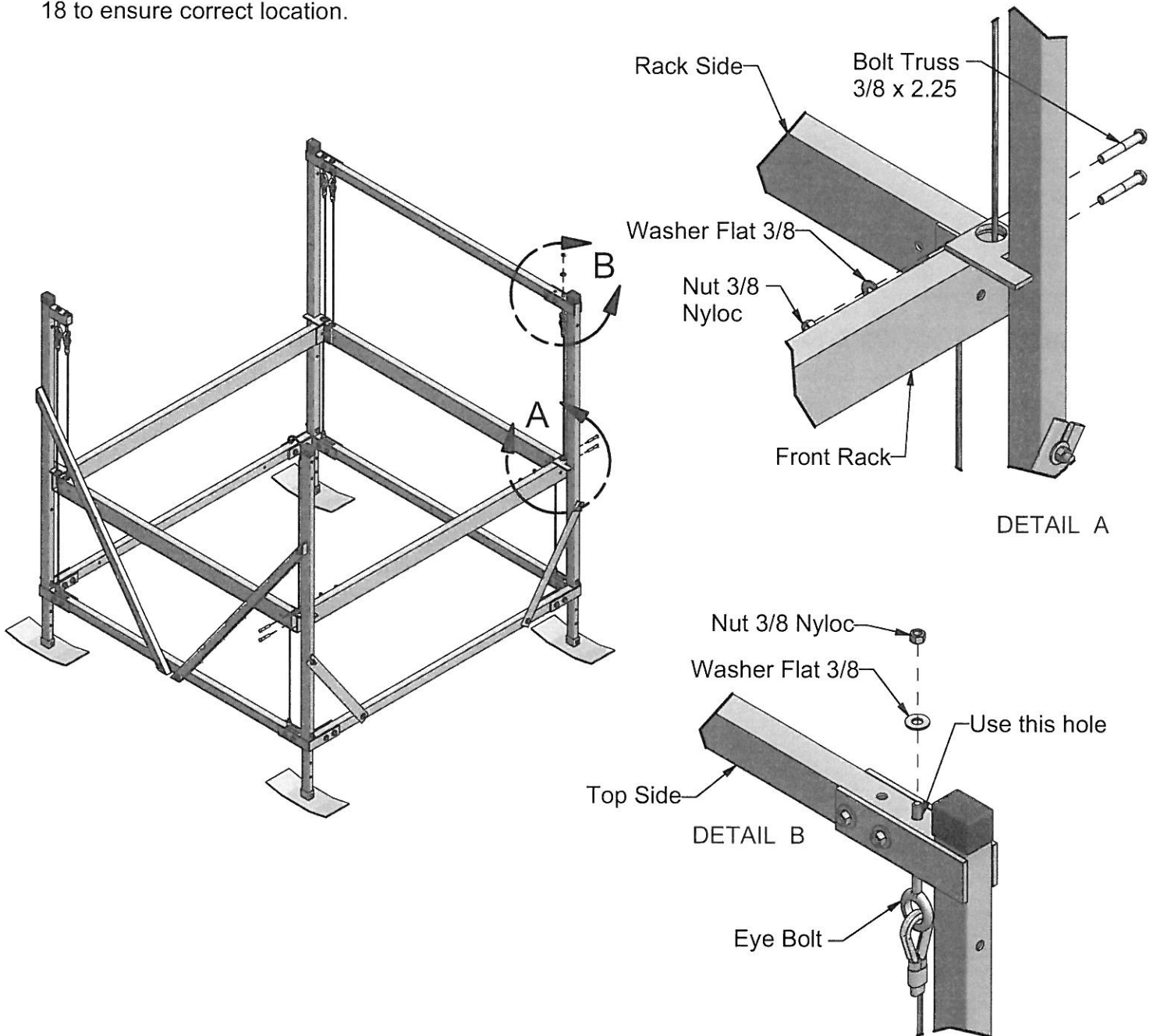


# STEP 8

Set the Front Rack in place and attach to the Rack Sides. At each end secure with one Bolt Truss 3/8 x 2.25, two Washers Flat 3/8 and one Nut 3/8 in two places - as shown in Detail "A."

Insert the Eye Bolt of the Front Rack cable through the hole in the Top Side. Secure with one Washer Flat 3/8 and one Nut 3/8 Nyloc - as shown in Detail "B." The other end of the cable is attached to the Winch 1202.

**Note:** There are five Eye Bolts to attach. See the drawing of Eye Bolts and cables on page 18 to ensure correct location.



# STEP 9

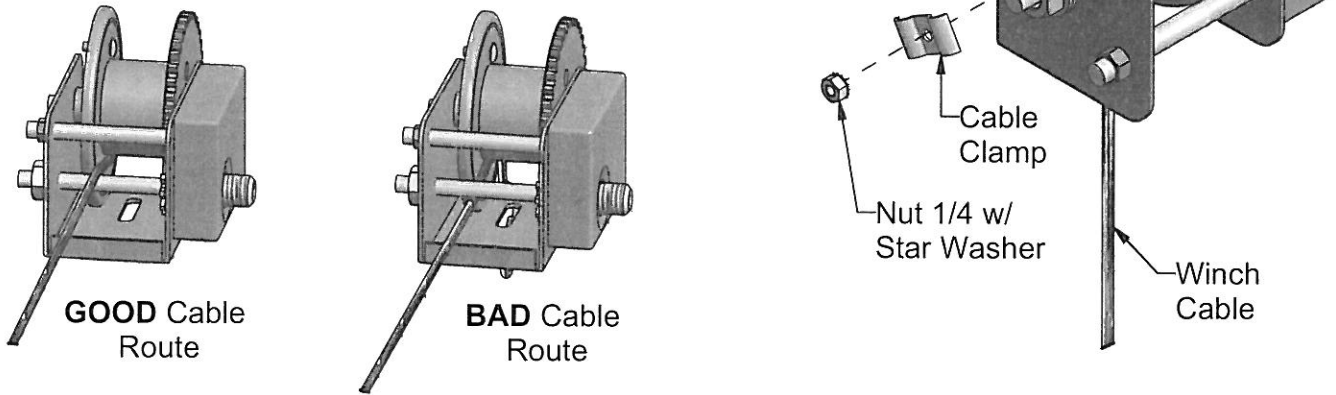
Firmly tighten all nuts and bolts at this time.

**Note:** Nyloc nuts should not be reused. If a Nyloc nut is removed it must be replaced with a new one.

# STEP 10

Route the Winch Cable in between the two cross-bolts of the Winch 1202. Insert the Winch Cable through the hole in the Winch 1202 Hub and create a loop around the square hole. Secure with one Bolt Carriage 1/4 x .75, one Cable Clamp, and one Nut 1/4 w/ Star Washer as shown in Detail "A."

**Note:** Wear leather gloves while handling the Winch Cable.

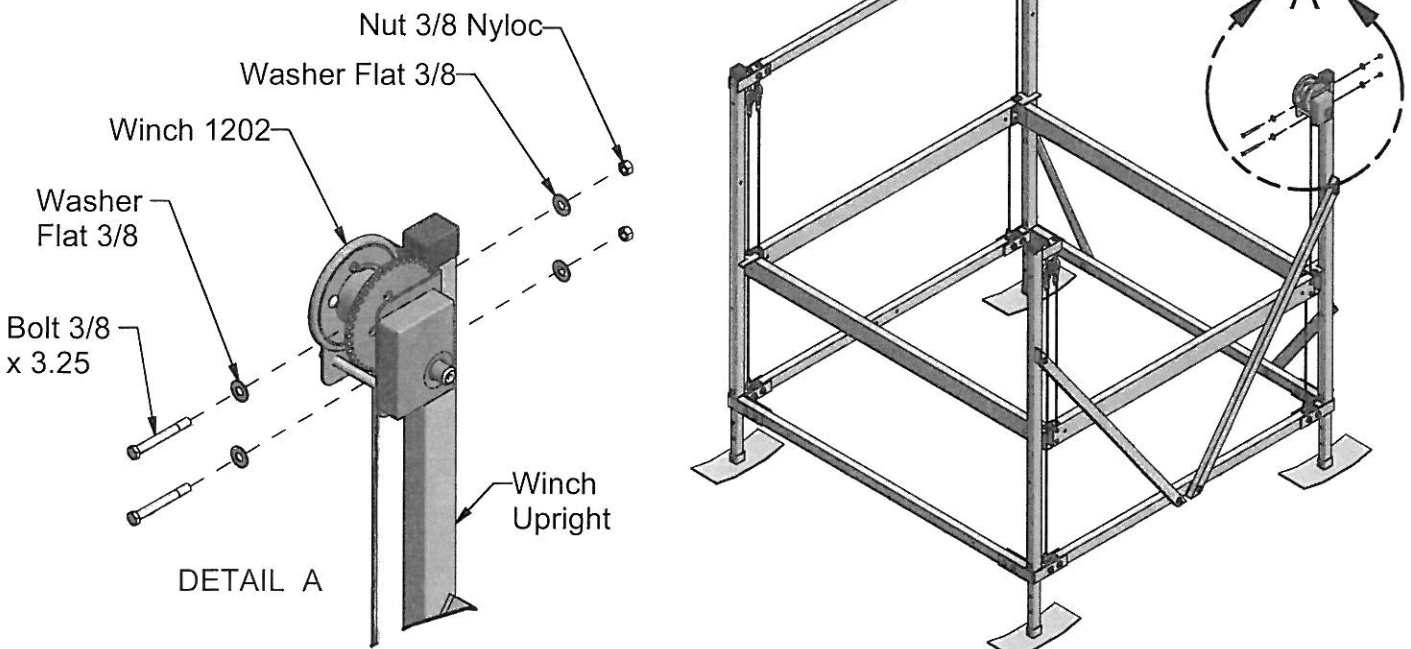


# STEP 11

Attach the Winch 1202 to the Winch Upright with two Bolts 3/8 x 3.25, four Washers Flat 3/8, and two Nut 3/8 - as shown.

**Note:** The Bolt Heads should be positioned on the Winch side and should protrude through the Winch 1202 and out the Winch Upright - as shown.

**Note:** The Wheel Shaft of the Winch 1202 must be facing to the outside of the lift - as shown.



## STEP 12

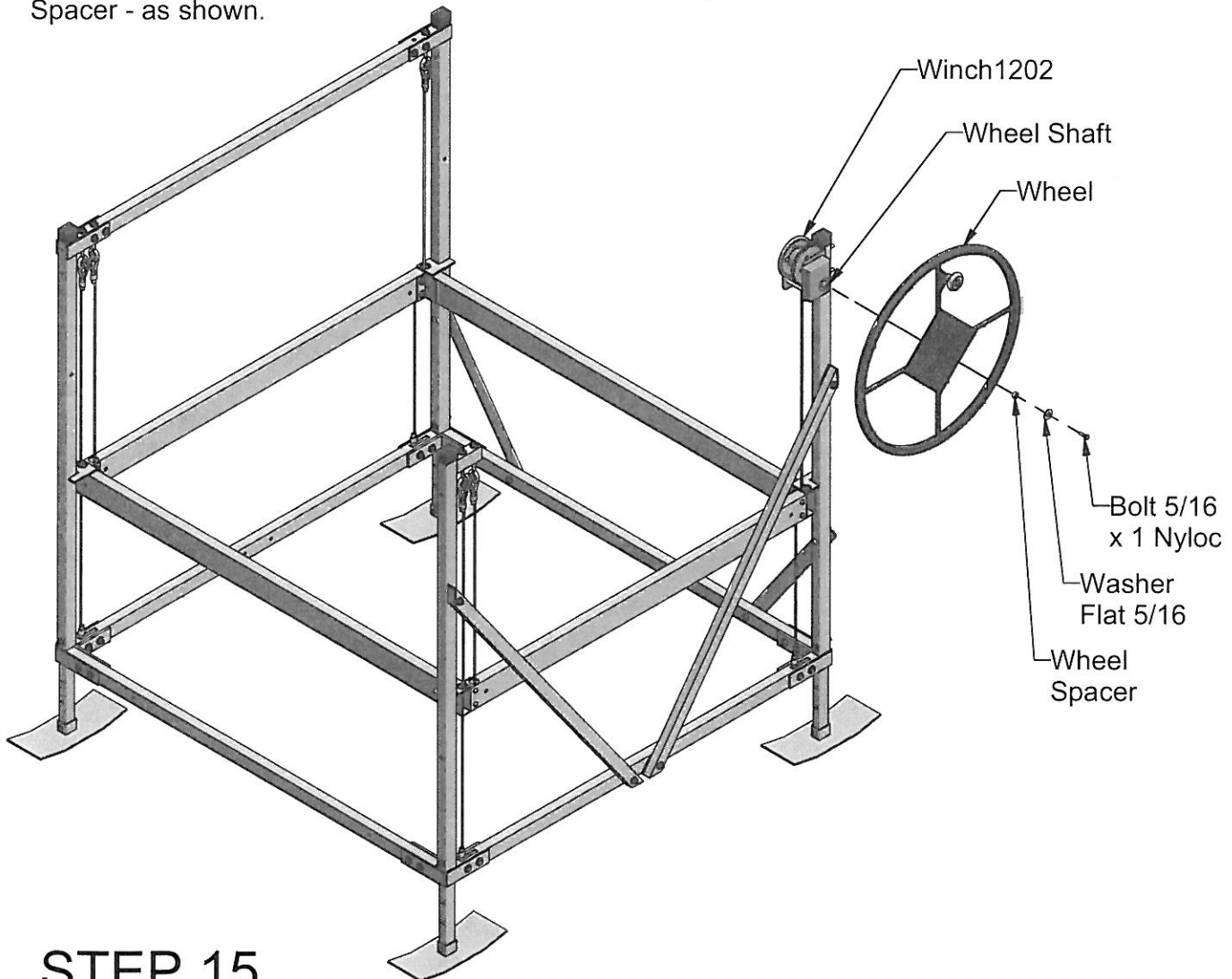
Thread Wheel clockwise onto Wheel Shaft until it touches the Brake Pad. The wheel must be fully against Brake Pad **and** a clicking sound must be heard when turning wheel up!

## STEP 13

Using a sharp knife or razor blade, cut a small hole in the middle of the Wheel, where the wheel sticker covers the attaching bolt hole.

## STEP 14

Secure Wheel to Winch 1202 using one Bolt 5/16 x 1 Nyloc, one Washer Flat 5/16, and one Wheel Spacer - as shown.



## STEP 15

Thread excess cable onto winch hub by turning the wheel clockwise. Be sure cable wraps tight and uniformly on hub with each strand lying snugly next to the adjacent strand. Keep tension on the cable by holding it tight when turning the wheel to develop a proper wrap. Do not allow cable to wind up loosely on hub.

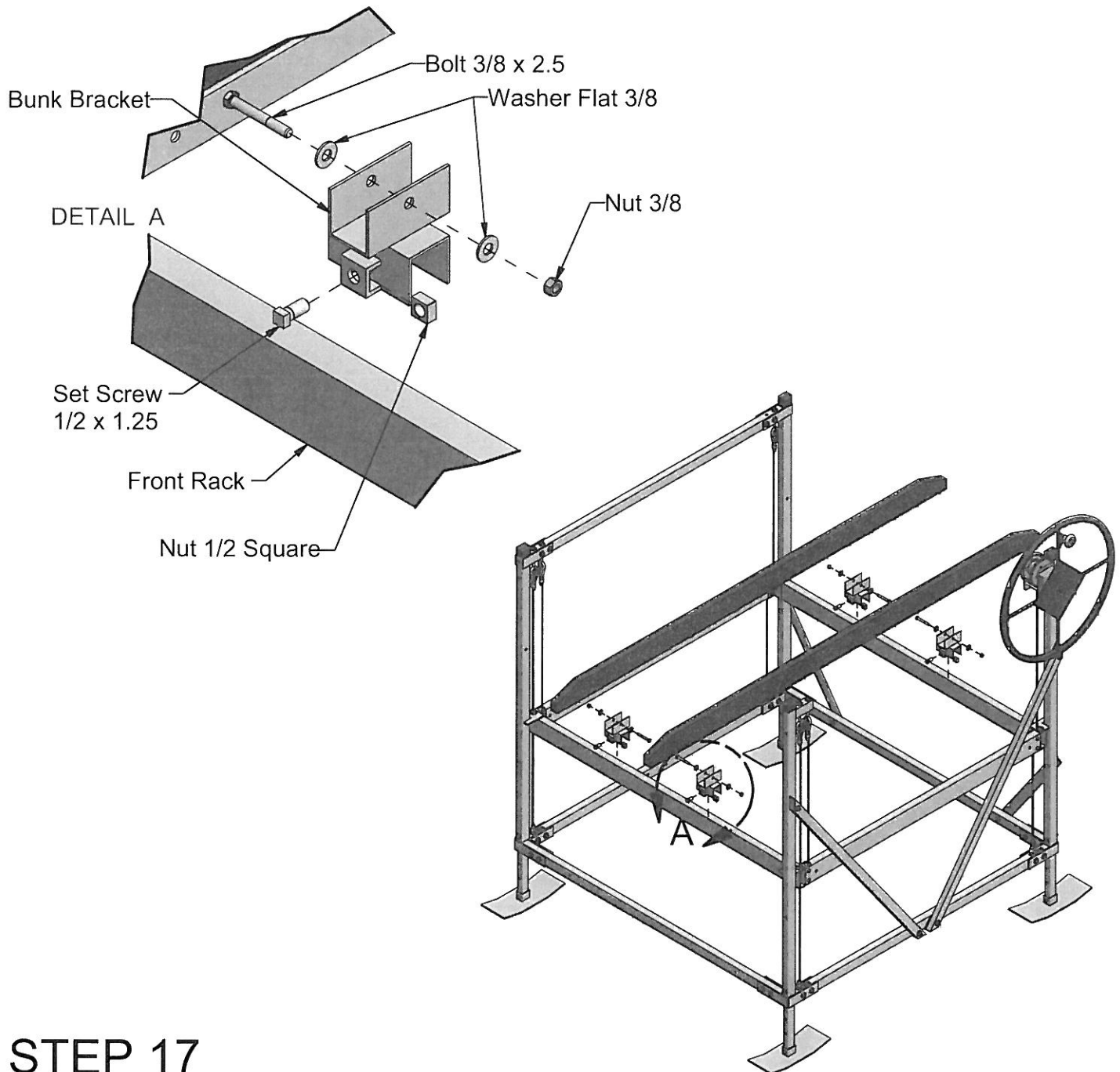
## CAUTION

Use a leather glove or other hand protection to avoid cuts when applying cable pressure. Cables wrapping incorrectly will result in rapid cable wear.



## STEP 16

Position the Bunk Bracket on Front and Rear Racks to fit watercraft. Secure each Bunk Bracket with one Nut 1/2 Square, and one Set Screw 1/2 x 1.25 - as shown in Detail "A."



## STEP 17

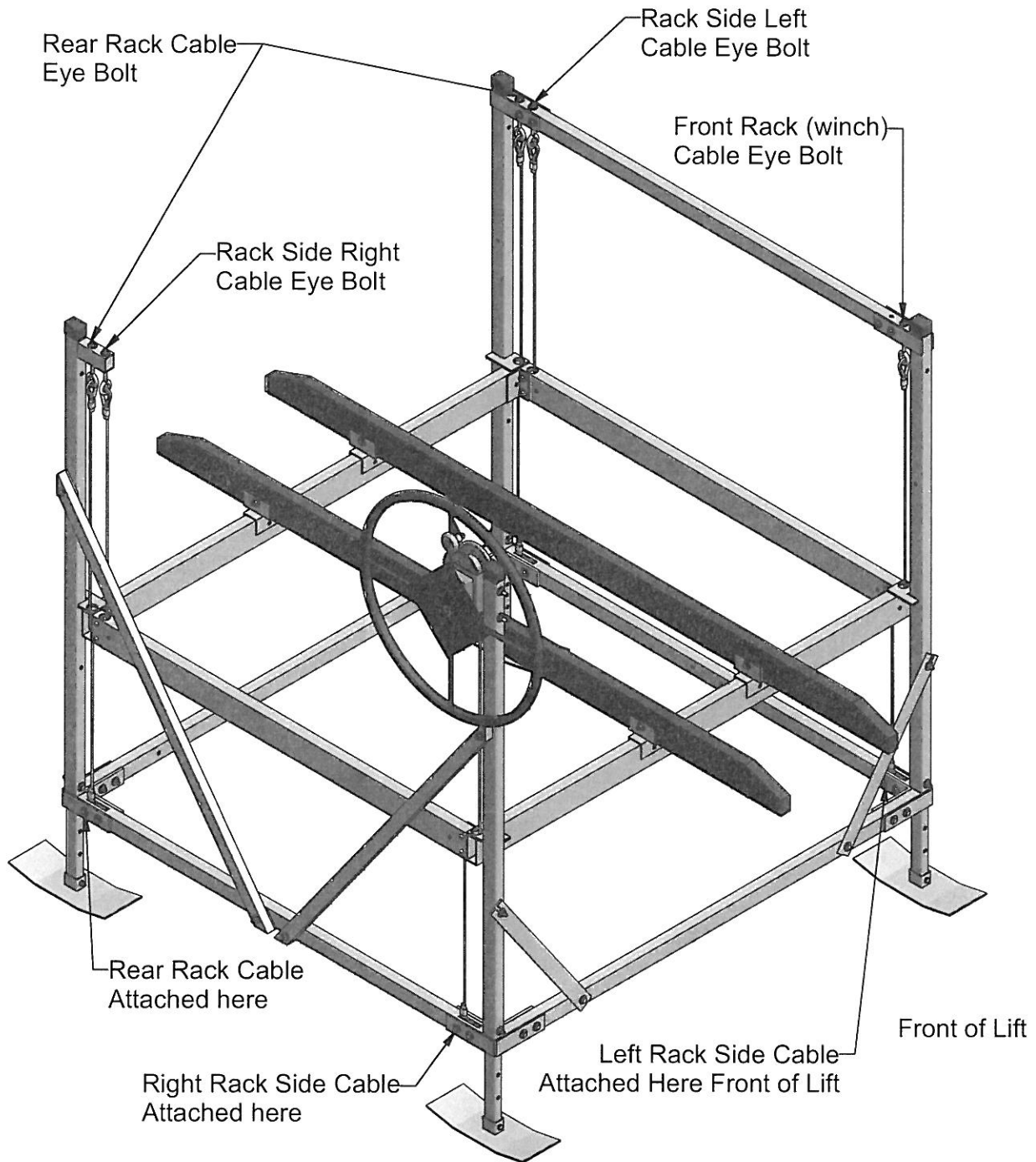
Attach optional ShoreMaster Carpeted Bunks to the Bunk Brackets with one Bolt 3/8 x 2.5, two Washers Flat 3/8, and one Nut 3/8 in each place - as shown in Detail "A."

## STEP 18

Make sure that all nuts and bolt are firmly tightened.

**Note:** Do not over tighten any connection using nyloc nuts or set screw.

# Proper Cable Locations



## CAUTION

Be sure washer is in place and that Nyloc Nut is tightened so at least 1/4" is exposed. Failure to attach cables, Eye Bolts, Washers and Nyloc Nuts correctly could result in a severe crushing, cutting or pinching injury. Severe damage to lift or boat could also occur.

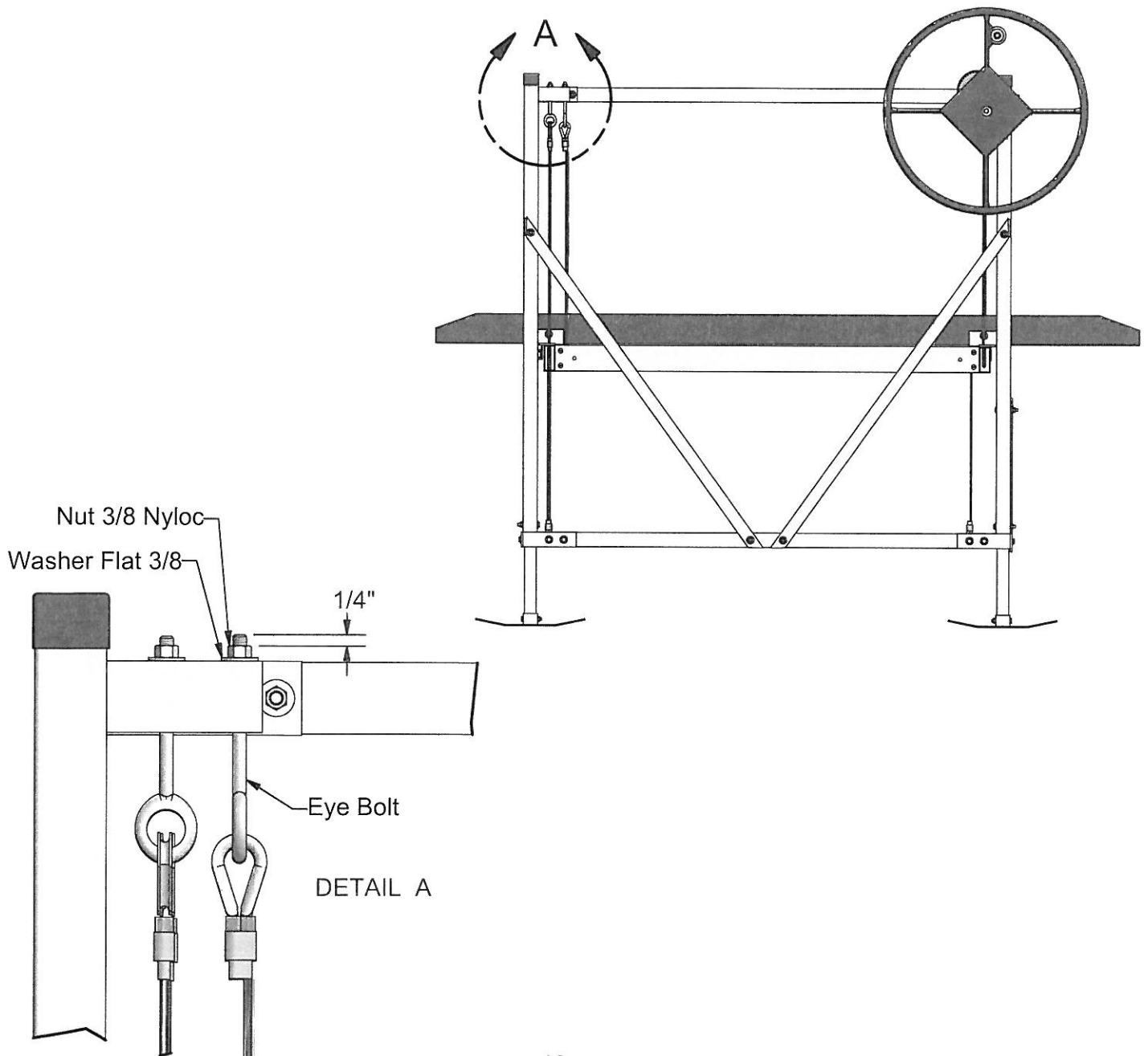
# Proper Cable Adjustment

a) There are four cables with Eye Bolts and nuts that must be adjusted to properly level cables. These Eye Bolts are all located near the rear uprights as shown.

b) Turn wheel so front rack beam raises about 6" above the bottom of frame. Adjust cables so all corners of rack are the same distance from frame.

**Note:** Adjust the cable length by turning the nut on top of the Eye Bolt. Hold the Eye Bolt stationary while adjusting the top nut. Using the frame below the rack as your reference point, measure the distance from frame to rack in each corner. These distances should all be within a 1/4 inch.

**Note:** Be sure washer is in place and that Nyloc Nut is tightened so at least 1/4" of Eye Bolt thread is exposed.



# INSTALLATION INSTRUCTIONS

Do not under any circumstances, endanger yourself or risk damage to your lift or boat when installing.

- Situations will widely vary between installation sites. ShoreMaster recommends that your dealer or other trained boat lift installer train you and perform the initial installation.
- Wear protective gloves, clothing and eyewear when assembling and installing the lift.
- Do not assemble, install or use this product if items are missing or damaged.

The following are guidelines or suggestions for installation:

## STEP 1

Measure the water depth of the position you want to locate the lift. Measurements should be taken at both the projected position of the end nearest shore and end furthest from shore.

## STEP 2

Before installing, adjust lift legs so the boat can float into position before raising, while still allowing a high enough position so the boat can be fully raised up and out of the water.

## STEP 3

Carry, lift or slide the lift into position alongside the dock.

## STEP 4

Ensure that your lift is level. Measure the distance from the top of the cross beam to the water surface. The distance at each of the four corners of the lift should be within two inches of each other. If they are not, adjust the legs accordingly.

**Note:** If the lift legs will extend 3 feet or more, ShoreMaster recommends deep water braces to stabilize and strengthen the lift. Ask your dealer for more information.

### CAUTION

The lift must be resting on the water bottom in a level, secure and stable position for safe operation. An unstable lift installation could result in tipping of the lift during operation, causing damage to watercraft and a crushing or pinching injury to the operator or bystanders.

## STEP 5

Position the Bunk Bracket to fit watercraft so that it does not come in contact with the frame of the lift. After loading and operating the lift pursuant to the operating instructions, remove the boat and recheck that the lift remains level.

# OPERATING INSTRUCTIONS

## CAUTION

When first using the boat lift after installation, the weight of the boat may cause the lift to settle and become unbalanced. Until you are certain the lift has stabilized, make sure people are not in the immediate vicinity of the lift.

Now that you have installed and leveled the lift, you are ready to raise your boat for the first time. Prior to use, see to it that anyone who may use the lift looks upon the unit not as a toy but a piece of heavy equipment that deserves your respect and good judgment.

- Before allowing anyone to operate the lift, be sure they fully understand the proper operating procedure.
- Do not exceed maximum capacity of the lift; overloading may cause mechanical failure and serious personal injury.
- Do not allow anyone who is in the water within six feet of the lift.
- Do not allow anyone on, in or under the lift while operating.

When operating the lift, the following procedures should be adhered to:

## STEP 1

Be sure the lift rack and cradles or bunks are positioned below the water surface so they will not interfere with the boat floating into position.

## STEP 2

Properly balance and center the boat on the lift prior to raising. The boat should be positioned with the center of gravity near the middle of the lift. For most rear engine mounted boats, this requires you to position the boat somewhat forward in the lift.

## STEP 3

Turn wheel in direction of arrow (clockwise) to raise lift. A clicking sound is heard when properly raising lift. Turning wheel and wrapping cable in wrong direction may cause fast spin down of wheel.

## WARNING

Stay clear of lifts (facing wheel) while operating. Do not allow anyone on, in or under lift. A cable or lift part failure can cause a sudden drop of boat, resulting in a crushing or falling injury or death!

## CAUTION

Do not touch wheel or attempt to stop it if fast spin down of wheel occurs. Placing hands or feet on spinning wheel can cause broken or cut limbs.

## STEP 4

Carefully bring the lift up until the bunks or cradles have secured the boat. Then, stop the lift and check to see that the bunks or cradles have automatically positioned themselves to the shape of the hull, as they are designed to do. If so, continue bringing the boat out of the water until it is about one foot above the surface. Stop the lift again and check the stability of the lift, particularly to see that it is fairly level and will not topple over. Finally, continue lifting the boat while paying close attention to the positioning of the lift until it is at its desired height.

## STEP 5

After loading and operating the lift, remove the boat and recheck that the lift remains level. (See Step 4 of the Installation Instructions.) If the lift is not level, the legs should be adjusted accordingly. Because the lift may settle and become unbalanced, the lift levelness should be rechecked two weeks after installation and periodically as needed.

## STEP 6

If lift is without a boat in it for more than one day, raise the rack (pulleys) fully out of the water to help prevent corrosion of these parts. At all times, make sure the boat is stored high enough out of the water to avoid wave action against the hull. A moving boat as a result of wave action will damage the lift and can take the boat off the lift.

## CAUTIONS:

1. Do not over raise lift rack. Stop before top of rack hits cable loops attached to Eye Bolts. Over raising could cause damage to winch, cables or other parts.
2. Do not over lower rack so slack develops in cable. Doing this could cause cable to jump off winch spool. This may result in sloppy wrapping of cable next time you raise the lift, resulting in premature wear or cable breaking. Turn wheel down one or two turns past point when craft begins to float (This must always be at some point before lift rack is contacting rear bottom beam). Then turn wheel up slightly until clicking sound is heard to secure wheel position and brake on winch.
3. Properly cover your boat, or pull your boat's plug when the boat is in a raised position. Rain water accumulating in your bilge can quickly increase your gross weight over the capacity of the lift.
4. Do not leave lift, or boat on lift, in water if ice formation is possible. Ice can severely damage your boatlift.

## SAFETY MAINTENANCE

### Monthly Checks

Check cables for frays, corrosion or breaks at least once a month. A cable breaking while boat is in lift could damage boat or lift. Severe bodily injury could also occur.

### Spring and Fall Checks

1. Inspect nuts and bolts for damage, wear or loose connections. Tighten or replace parts as needed.
2. Inspect lift frame, pulleys, winch and pivot points for unusual wear, damage or bent parts. Replace or repair as needed.
3. Check that the rack is level with the bottom frame of your lift. Cable stretching or settling of lift could require you to adjust nuts on Eye-Bolts.
4. Lubricate winch and wheel threads. Do not get lubricant on brakepads! Brake will fail and wheel will spin down if brake pads are lubricated.
5. Check and lubricate pulleys to ensure that they are turning freely.
6. Check Eye-Bolts to make sure they are not working themselves loose.

ShoreMaster dealers usually offer service visits. Please contact them if you are unable or unwilling to perform maintenance or service to lift.

# LIMITED WARRANTY

ShoreMaster, Inc. warrants all ShoreMaster brand docks and lifts purchased new by the original owner to be free from defects in the aluminum structure and welds for a period of 15 years. A five-year pro-rated warranty applies to canopy vinyls. All other components are subject to the warranty terms provided by their manufacturer.

SHOREMASTER INC WILL AT ITS OPTION REPAIR OR REPLACE WITHOUT CHARGE, OR ALLOW CREDIT FOR ANY SUCH GOODS FOUND ON EXAMINATION BY SHOREMASTER TO BE DEFECTIVE UNDER NORMAL USE AND SERVICE. THE BUYER'S REMEDIES WITH RESPECT TO DEFECTIVE GOODS SHALL BE EXCLUSIVELY LIMITED AS ABOVE PROVIDED AND IN NO EVENT SHALL THE SELLER BE LIABLE FOR INCIDENTAL OR CONSEQUENTIAL DAMAGES OF ANY NATURE. ALL REPAIR WORK MUST BE DONE BY A REGISTERED SHOREMASTER DEALER.

This warranty does not cover damage caused by improper use, installation, overloading, accident, neglect or harmful alterations or repairs made by others, damage by snow or ice, salt water, electrolysis, severe weather conditions and Acts of God.

Written notice of a discovered defect covered under this warranty must be received by ShoreMaster, Inc., prior to the expiration of the warranty, based on the date of purchase shown on customer's invoice. Warranty on canopy frame requires proof of purchase of a ShoreMaster manufactured vinyl.

**Your warranty must be registered. See the warranty card on the next page.**